

THE PREMIER SPRING CUP INFO PACKAGE



JUNE 14TH & 15TH | SURREY, BC



Welcome to the Premier Spring Cup! We have tried to answer as many questions as we can about the event but any other question you may have you can go to the Headquarters tent in the park where you are playing.

SCHEDULE

You can view the schedule by going to your dashboard or by using the links below:

[PREMIER SOCCER SERIES WEBSITE](#)

[THE REGISTRATION SYSTEM](#)

GAME TIMES

All games **MUST** start exactly on time to maintain the tournament schedule. Failure to start the game on time may require the game length to be reduced accordingly.

PARK HIGHLIGHTS & INFORMATION

HEADQUARTERS TENT

All parks will have a HQ tent. If you need anything during the event the quickest way to get in touch with us is through the tent. Staff will be available all weekend at each tent.

CHECKING IN

Teams do not need to check in, all information should be uploaded to your dashboard before the event.

PLAYER ID CARDS

Teams do not need to show Player ID cards at each game. Please have proof of age available for all players in case you are asked by a tournament official at any of your games.

GAME SHEETS & SCORE REPORTING

Teams do not need to print game sheets or report scores. Please be patient for scores to be uploaded to the website, depending on the number of games ending at a given time it may not happen right away but they all will be uploaded as soon as possible.

If you believe the score was entered incorrectly please text (604) 795-6970 with the park, age group, game time and team names/score. We will confirm the score and update it, if it has been entered incorrectly.



U14 - U18 final games will appear on the schedule once all games in your division have been played.

TOURNAMENT STAFF

Field Marshalls can be found through-out the parks. If you can't find a Field Marshall go to the park headquarters.

REFEREE

U9 – U13 will have a referee, and U14 – U19 we will make our best effort to have 3 officials at all games.

If your referee is not at the field 5 minutes before the start of your game, please visit the closest field marshal tent and let us know.

WARM UP AREAS

There are no assigned warm up spaces, they are first come first served. There will be limited time to warm up on your field before your game.

FIRST AID/ATHLETIC THERAPIST

First Aid/Athletic Therapists will be on site for minor injuries and taping (where time permits). Players must either supply their own tape or pay a nominal fee to the Athletic Therapist.

IF THERE IS AN INJURY ON YOUR FIELD

Can the player walk? Bring them to the First Aid tent next to HQ.

If the player can not walk find a Field Marshall or let our Headquarters staff know and the Athletic Therapist will come to you.



IN CASE OF EMERGENCY ALWAYS CALL 911

As you are calling 911 have someone from your field come to Headquarters.

TENTS & BENCHES

All full sized fields will have shelters and benches. Small sided (U9 - U13) fields will not have benches/tents

TEAM MEETING PLACE



The parks get busy and it can be hard to locate your team if you do not know where they are meeting. Make a team meeting place & time before each game to make finding your group easier.



NEWTON ATHLETIC PARK

[NAP FIELD MAP](#)

TURF FIELDS

IN, IS, 4N, 4S, 5N, 5S & MINI I

GRASS FIELDS

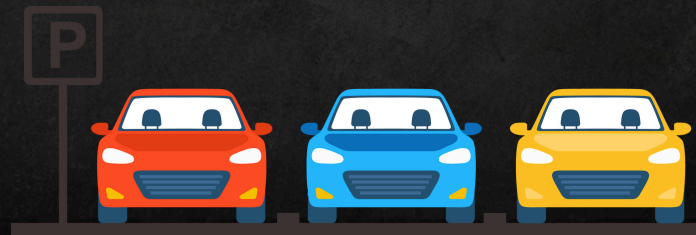
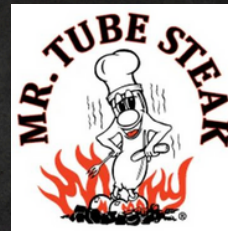
MINI 2, MINI 3, MINI 4 , MINI 5 (On Field 3), 7, 8, 9 & 10

FOOD TRUCKS:

TNT WRAPS

MR TUBE STEAK

LITTLE OOTIES (SUNDAY ONLY)



PARKING

The City of Surrey is in the middle of upgrading two of the turf fields and has blocked off some of the parking lot for their equipment, which will make parking even tighter than usual at NAP.

Leave yourself plenty of time to park and find your field.

Do not park on yellow curbs or block entrances, there is overflow parking across the street at FD Sinclair Elementary School.



SOUTH SURREY ATHLETIC PARK

TURF FIELDS

3, 8, 9, 10

GRASS FIELDS

1, 2, 4, 5, 6 & 7

FOOD TRUCKS:

MR TUBE STEAK

KONA ICE



PARKING

Parking for fields 1, 2, 3 & 4 can be found off of 148th street just past 20th Ave at the Semiahmoo High School parking lot.



SSAP FIELD MAP

CLOVERDALE ATHLETIC PARK

TURF FIELDS

IN, IS, 2N, 2S, 3N & 3S

GRASS FIELDS

4 & 5

FOOD TRUCKS

BOOSTER JUICE

LITTLE OOTIES MINI DONUTS (Sunday Only)



CAP FIELD MAP



HJORTH ROAD PARK

TURF FIELDS
IN, IS, 2N & 2S

FOOD TRUCKS:
KONA ICE



HJORTH FIELD MAP

GAME FORMATS



U9 (2017) - U10 (2016)

7v7 (6 plus Goalkeeper) for 2 x 25min halves

U11 (2015) - U12 (2014)

8v8 (7 plus Goalkeeper) for 2 x 30min halves

U13 (2013)

9v9 (8 plus Goalkeeper) for 2 x 30min halves

U14 (2012) - U15 (2011)

11v11 (10 plus Goalkeeper) for 2x 30 min halves

U16 (2010) - U19 (2007)

play 11v11 (10 plus Goalkeeper) for 2x 35 min halves

In the case of mixed age groups, groups always play by the format of the oldest group.

COMPETITION FORMATS

POINTS/SCORING FOR U14+

3 points for a win

1 point for a tie

0 points for a loss

1 point per goal scored (max of 3 per game)

2 points for a shutout

Maximum number of attainable points per game is 8

TIE-BREAKING FORMULA

- Head to Head
- Most wins
- Goal difference
- Goals for
- Goals against
- Lottery

The tournament director will have the final say on all tie-breaking scenarios.

JERSEY COLOUR

In case of teams having similar jersey colour - home team changes.

[VIEW JERSEY COLOURS HERE](#)

If you did not enter your jersey colour during registration and would like to have it added to the list email tmcculloch@premiersoccerseries.com

[VIEW ALL TOURNAMENT RULES & POLICIES HERE](#)

IMPORTANT INFORMATION



Please keep in mind that the spirit of this event, for all levels, is to have fun and compete against other teams of similar ability. We understand that everyone likes to win; however, in the process, we expect that all teams respect their opponents and the match officials.

CONDUCT

The Premier Spring Cup has a zero-tolerance policy for verbal and/or physical abuse of any referee by players, team officials, parents or spectators and will take any infraction seriously (potential suspension for entire event or team expulsion from the tournament)

Players, coaches, and spectators are expected to conduct themselves within the Laws of the Game and generally accepted good sportsmanship. Displays of temper or dissent are cause for ejection from the game and surrounding field area. Repeated violations may result in the suspension/expulsion of the team in question.

It is the responsibility of the Club/Team staff to control the conduct of its parents and other spectators. Failure to do so may result in a warning to the coach or person acting on the coach's behalf.

If unacceptable behaviour persists, the referee may terminate the match.

All participants should be aware that Field Marshals have the authority and right to remove any unruly or uncivil spectators from the game field perimeter and/or the field complex area.

Absolutely no alcoholic beverages are permitted in the park.



DISCIPLINE

Any player/coach receiving a red card in a match is subject to discipline as follows:

- An automatic suspension for his/her next game
- Potential further review/suspension by the discipline committee

The referee's decision in matters concerning the Laws of the Game is considered final. The Tournament Officials will not overrule a referee's decision.

PROTESTS

Only protests regarding non-referee decisions will be permitted.

All protests will only be entertained if received, in writing, within one hour after the completion of the game in question. A \$250.00 fee, payable in cash, must accompany all protests. Protests and fees can be delivered to the tournament headquarters. The protest fee will be fully refunded if the protest in question is deemed valid.

GRIEVANCES

The following process has been implemented to address any complaints or issues that arise throughout the event.

- Grievances must only be reported by Team Managers by email to the Tournament Officials xxcup@ellevenmanagement.com
- Any reports from anyone other than a team official will be deleted upon receipt.
- Provide a clear written account of the incident including – game number, time & location - name/names of persons involved

A Tournament Official will respond to the grievance .

- All reports will be addressed in order of severity.
- All reports will be taken seriously; but not all will warrant further investigation.
- Some reports may not be addressed until after the event if they do not affect the outcome/running of the event.

CHAMPIONS & FINALISTS U14 and over

U14 and over teams will play for a Champion & Finalist trophy.

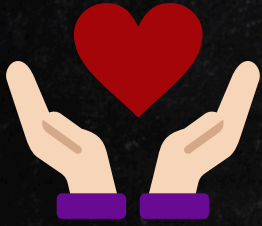
If you are in an even group 4, 6, 8 or 10 teams you will play 3 games and then have a Championship Bracket game. All teams will have a game regardless of what place they are in. Not just first and second place.

If you are in an odd group 5, 7, 9 or 11 teams you will play 4 games and the Champion and Finalist will be determined by points.

All Championship and last games in odd groups will happen at South Surrey Athletic Park. When you are done your last game, have your team head to the trophy presentation area and have 1 member from your team check in at the Headquarters tent.



CHAMPIONS FOR CHARITY



While we know that players love to receive a medal for their accomplishments, we feel that this joy is quite short lived for photos and then that item ends up in a drawer or landfill.

So we decided to re-imagine our award system with the following objectives:

- Continue to recognize our teams who finish in the top 2 spots with a small trophy to commemorate the event.
- Reduce waste and items going into the landfill
- Donate to charitable and worthy causes
- Align winning mentality with the spirit of giving back to others

So going forward we will be donating \$100 per team on behalf of all of our U14-U18 teams who finish 1st or 2nd in their division of the tournament.

We have identified three (3) organizations to direct donations towards. It was important to recognize causes that had a connection to one or more of the following:

- Sport
- Children
- The communities that we operate

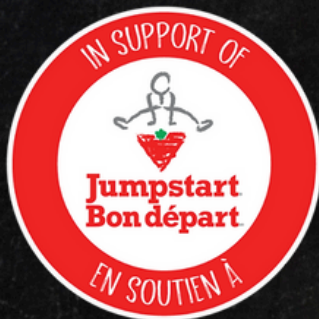
THE PRESENTATION

Our awards and trophy presentation will be similar to previous years, with the only difference being that teams, in lieu of medals, teams will huddle up and identify the charity that they wish to support. They will hoist the trophy and a “cheque” to the organization they selected for photos. Teams then get to keep the trophy.

At the end of the tournament we will list the teams and their selected organization on our website and a donation will be made on their behalf.

THE CHARITIES

Jumpstart | Kidsport | BC Children's Hospital



LEARN MORE ABOUT THE CHARITIES

JOIN US

FUTURE PREMIER EVENTS

PREMIER CANADA DAY CUP

JUNE 28th - 30th 2025

KELOWNA, BC

PREMIER INTERNATIONAL CUP

AUGUST 30th - SEPTEMBER 1st 2025

SURREY, BC

PREMIER THANKSGIVING CUP

OCTOBER 11th - 13th, 2025

KELOWNA, BC

PREMIER SPRING SHOWCASE & FESTIVAL

APRIL 3rd - 5th 2026

SURREY & BURNABY, BC

PREMIER PLAYER ID CAMP

APRIL 6th 2026